

**BUDYNEK D  
MIESZKANIE 4**

**PARTER**

0 Wiatrołap 1.38 m<sup>2</sup>

**1 PIĘTRO**

1 Kl. schodowa 10.15 m<sup>2</sup>

2 Korytarz 6.92 m<sup>2</sup>

3 WC 2.39 m<sup>2</sup>

4 Spiżarka 1.37 m<sup>2</sup>

5 Salon z aneksem 25.61 m<sup>2</sup>

**Razem: 46.44 m<sup>2</sup>**

**2 PIĘTRO**

6 Korytarz 4.19 m<sup>2</sup>

7 Pokój 6.97 m<sup>2</sup>

8 Łazienka 6.25 m<sup>2</sup>

9 Pokój 7.29 m<sup>2</sup>

10 Pokój 9.66 m<sup>2</sup>

11 Kl. schodowa 4.15 m<sup>2</sup>

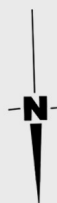
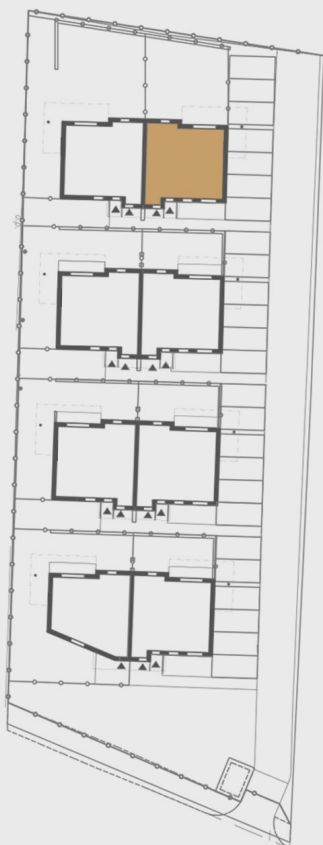
12 Pokój 9.76 m<sup>2</sup>

**Razem: 48.27 m<sup>2</sup>**

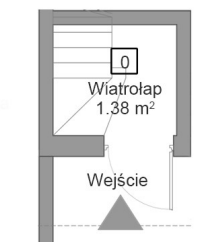
**Pow. użytkowa: 94.71 m<sup>2</sup>**

Balkon 1: 24.00 m<sup>2</sup>

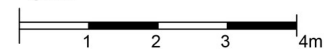
Balkon 2: 11.10 m<sup>2</sup>



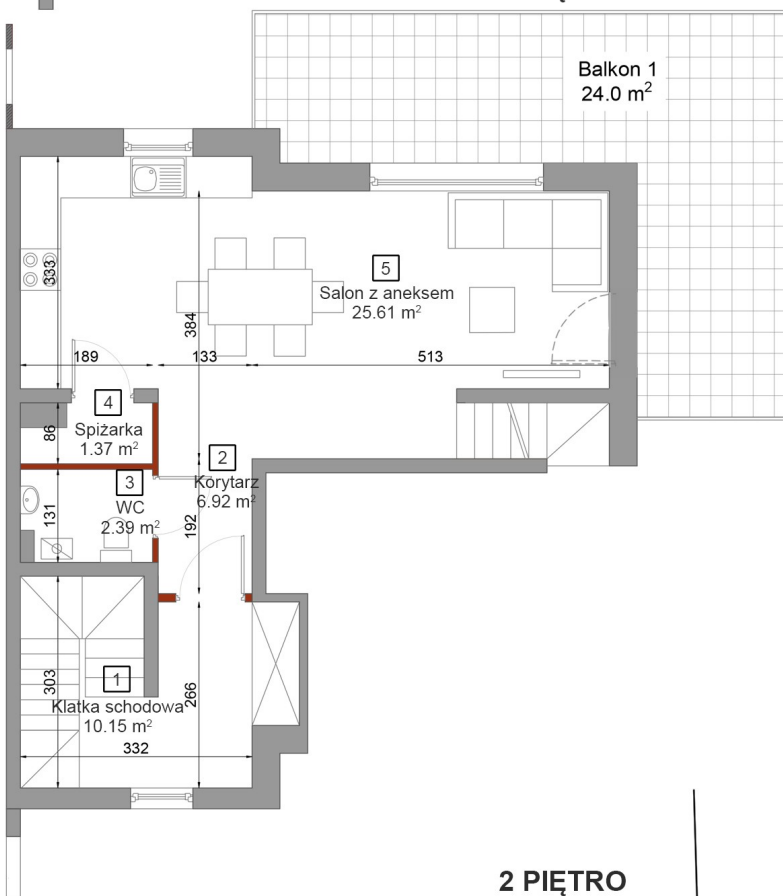
**PARTER**



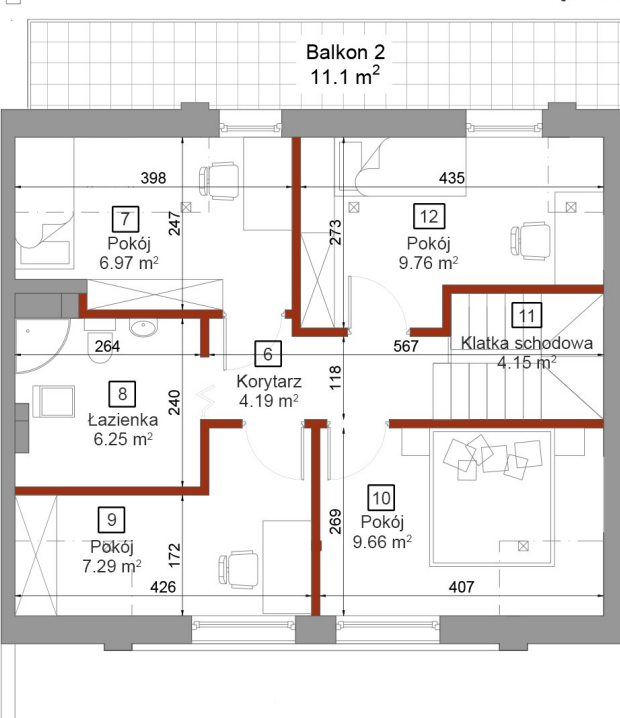
Skala




**1 PIĘTRO**



**2 PIĘTRO**



 Powierzchnia ścian działowych możliwych do demontażu / wyburzenia