

**BUDYNEK D
MIESZKANIE 1**

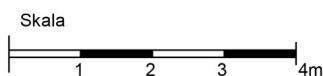
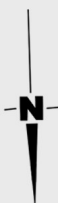
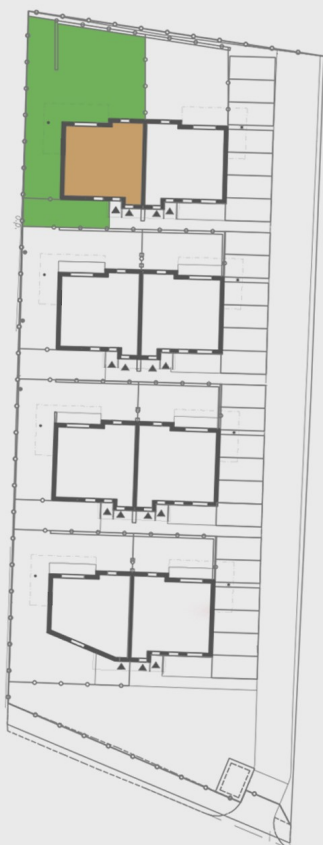
PARTER

1	Wiatrołap	3.39 m ²
2	Salon z aneksem	25.61 m ²
3	Korytarz	8.37 m ²
4	Łazienka	4.05 m ²
5	Pokój	6.71 m ²
6	Pokój	7.60 m ²
Razem:		55.73 m²

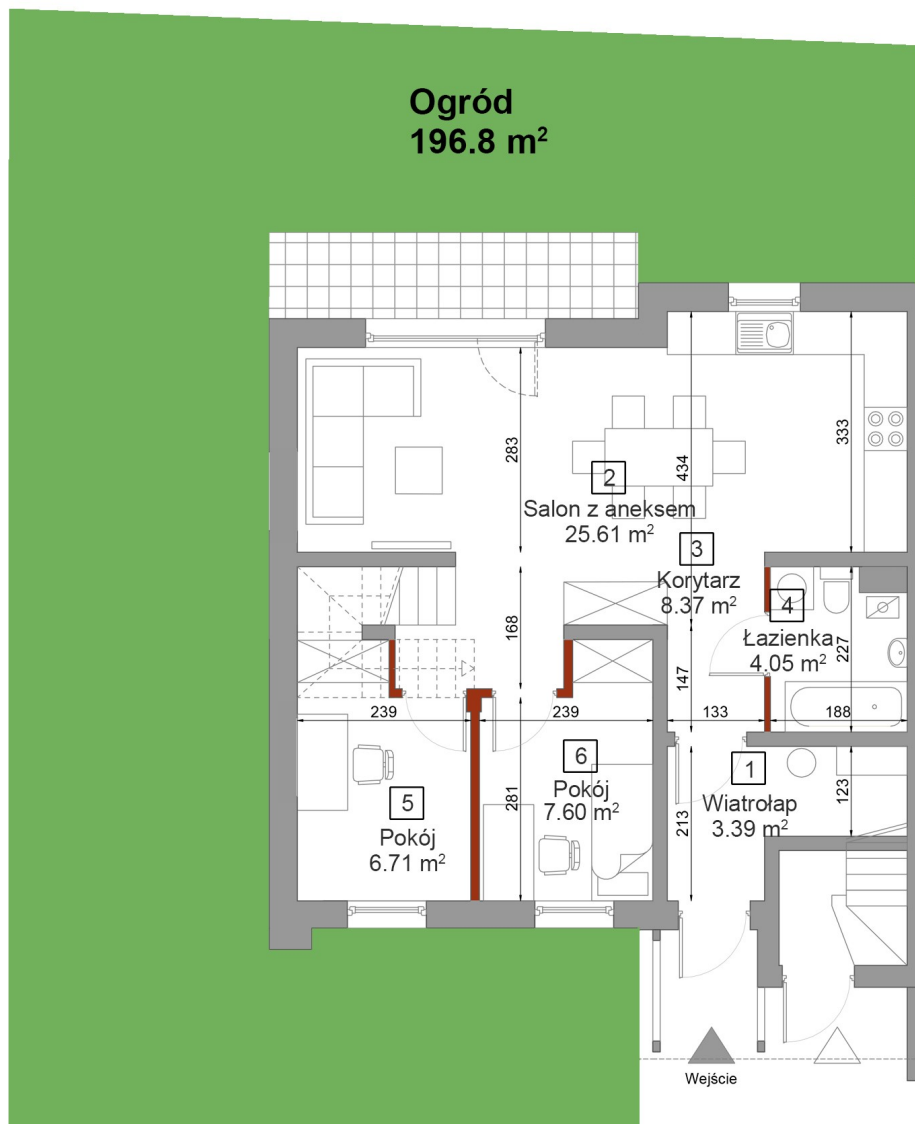
1 PIĘTRO

7	Kl. schodowa	4.74 m ²
8	Sypialnia	11.07 m ²
9	Garderoba	2.21 m ²
Razem:		18.02 m²

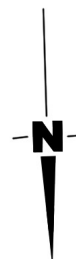
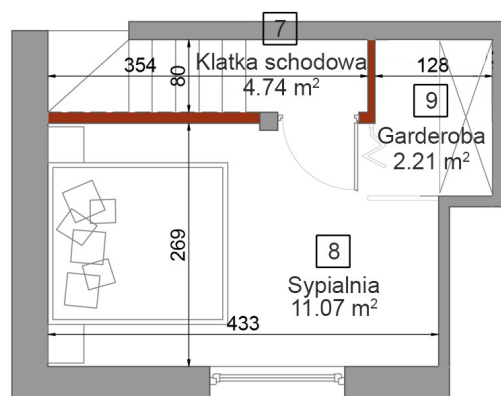
Pow. użytkowa: 73.75 m²
Pow. ogródka: 196.80 m²



PARTER



1 PIĘTRO



 Powierzchnia ścian działowych
możliwych do demontażu / wyburzenia