

**BUDYNEK A  
MIESZKANIE 1**

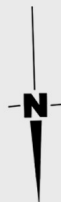
**PARTER**

1	Wiatrołap	3.39 m <sup>2</sup>
2	Salon z aneksem	25.61 m <sup>2</sup>
3	Korytarz	8.37 m <sup>2</sup>
4	Łazienka	4.05 m <sup>2</sup>
5	Pokój	6.71 m <sup>2</sup>
6	Pokój	7.60 m <sup>2</sup>
<b>Razem:</b>		<b>55.73 m<sup>2</sup></b>

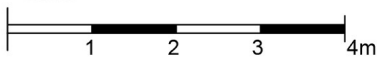
**1 PIĘTRO**

7	Kl. schodowa	4.74 m <sup>2</sup>
8	Sypialnia	11.07 m <sup>2</sup>
9	Garderoba	2.21 m <sup>2</sup>
<b>Razem:</b>		<b>18.02 m<sup>2</sup></b>

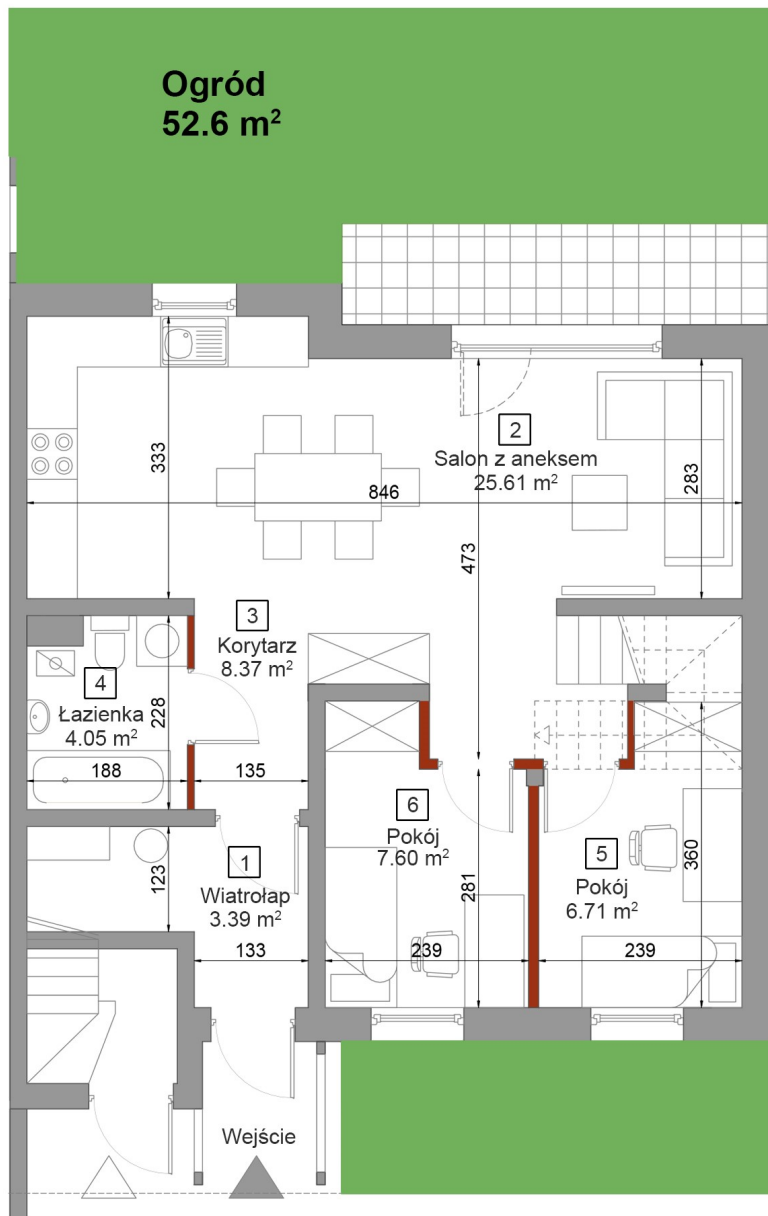
**Pow. użytkowa:** 73.75 m<sup>2</sup>  
**Pow. ogródka:** 52.60 m<sup>2</sup>



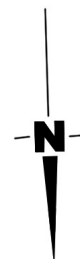
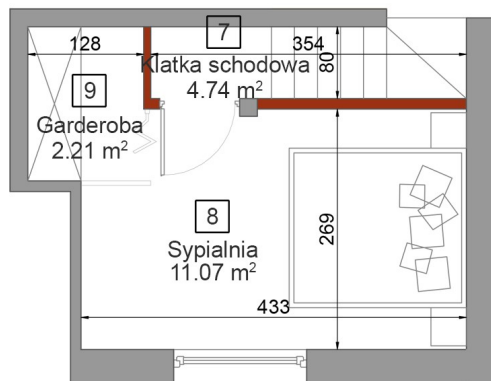
Skala



**PARTER**



**1 PIĘTRO**



 Powierzchnia ścian działowych  
możliwych do demontażu / wyburzenia